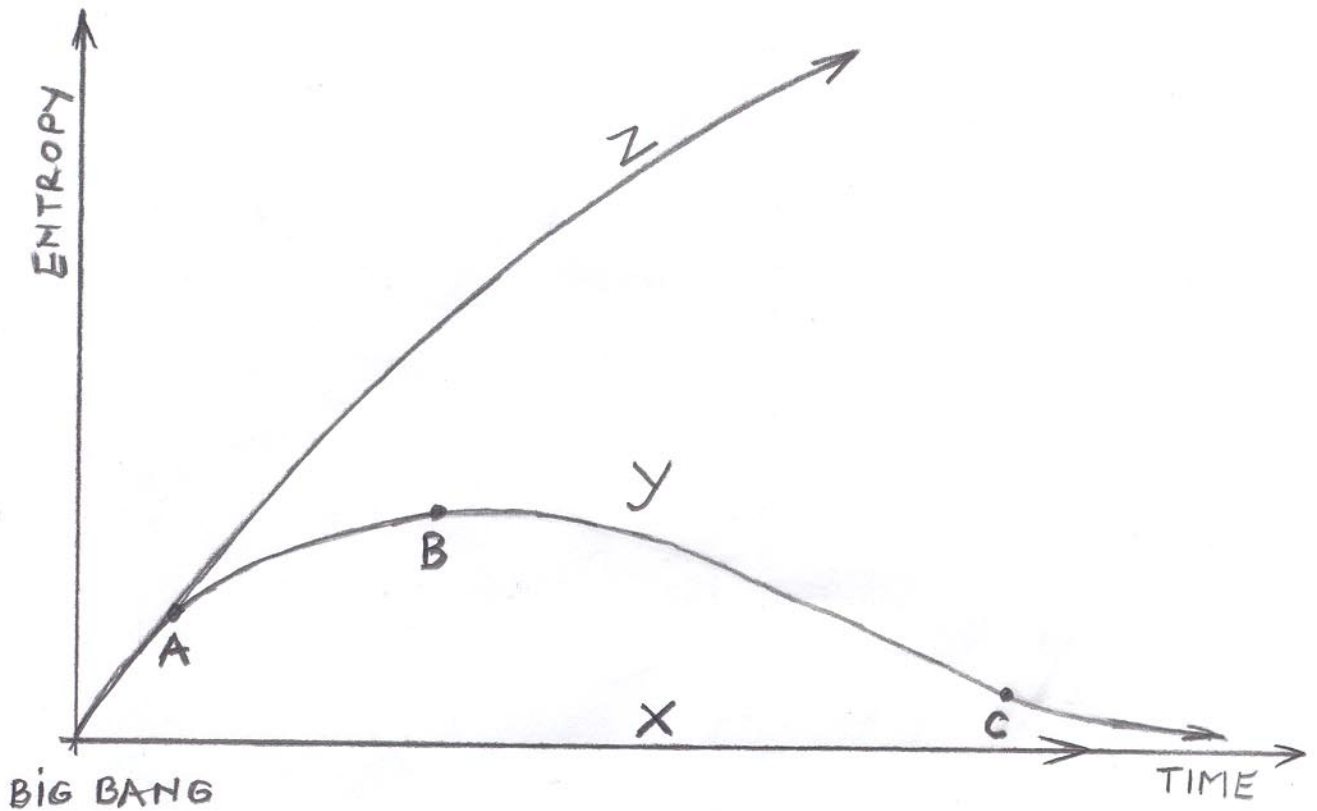


ENTROPY DIAGRAM



$$Y = f(X)$$

Y stands for evolution of life as a continuous negentropic process

X stands for a total entropy of the universe that sums to zero

Z stands for a continuous increasing of the entropy of the matter after big bang

A-B stands for chemical evolution

B-C stands for biological evolution

C-- stands for the evolution of man